

*Your
Quality Time.*



EURA MOBIL



***Xtúra* EXTREMELY
SELF-SUFFICIENT**



GO YOUR OWN WAY

With the new Xtura, you can discover practically endless possibilities for turning leisure time into mobile freedom. The vehicle's 4x4 drive system ensures reliable acceleration, even in adverse road conditions. With its optional all-road tyres with an excellent grip, as well as a torsion-resistant superstructure, the Xtura is also able to conquer difficult terrain off the beaten track. In the Overland version, even bulky additional luggage can be securely held on the roof rail equipped with a universal grid and a ladder.

CREATE YOUR OWN FREEDOM

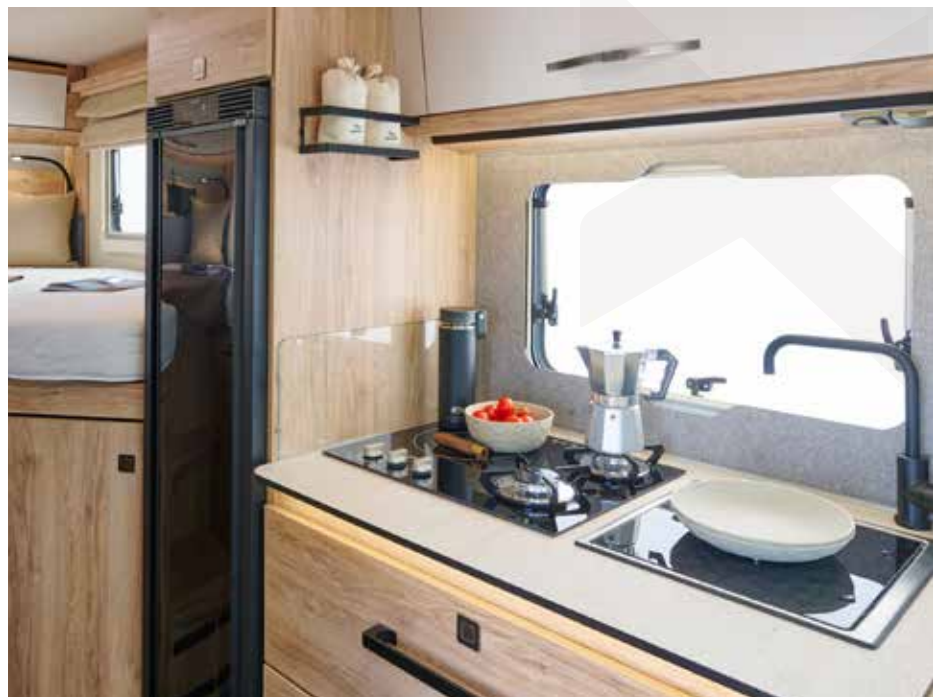
The Xtura is a real bundle of energy that allows you to not only achieve personal freedom but also maintain it. With a 330Ah lithium battery, including an inverter and a solar power system on the roof (optional), energy self-sufficiency is guaranteed for several days. The technical equipment also gives you the freedom to be independent: a compressor fridge, a cooker combination with 2 gas hobs and 1 induction hob and a 3kW inverter give you all the freedom you need.



X WANDERLUST WITHOUT HOMESICKNESS

Inside the Xtura, you take your own world with you on your journey. The bright friendly interior with a chalet oak décor and stylish and practical felt pockets is your very own personal feel-good space. In the kitchen, matt-black fittings and practical details such as towel rails elegantly integrated into drawer fronts catch the eye along with the combination hob with gas and induction rings. You can control the perfect cosy temperature using the hot water heating system, which even provides pleasant warmth on the floor.





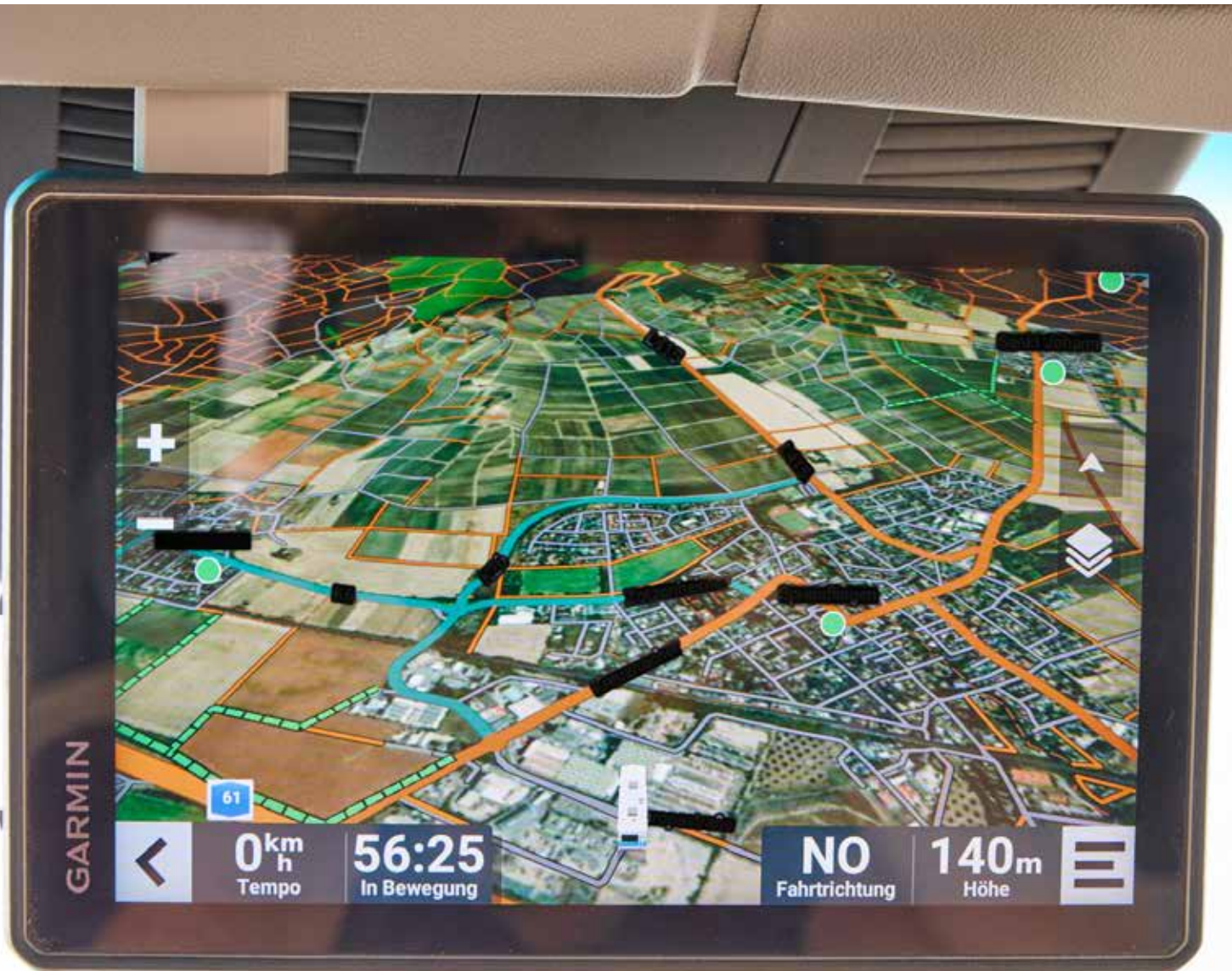
RELAX AND GO EXPLORING

Comfort and relaxation play an important role in the Xtura, despite its manageable overall length of considerably less than 7 metres and a width of just 2.20 metres: the comfortable single beds, each with a mattress length of 1.95 metres, are perfect for resting on long-distance journeys. Bicycles and other sports equipment can be securely anchored in the garage with lashing rails under the beds. In addition, the clever washroom design with a swivel shower wall creates the perfect opportunity to freshen up for every need.

VENTURE INTO THE UNKNOWN WITH CONFIDENCE

The Xtura can be equipped with Garmin World Wide Navigation to keep you on course at all times – even off the beaten track.

A satellite-supported and mobile network-independent emergency call function provides additional security here. Your Xtura is also easy to look after on long-distance journeys: the Daimler Benz Truck Service network and the Empirbus service network ensure that the base vehicle and electronic system will be in expert hands in many countries, even outside Europe, if required.





KEEP CALM AND CARRY ON

Everything the dynamic design of the sleek hood and the striking add-on parts suggests from the outside is confirmed by the vehicle's interior quality. The basis for the Xtura's robust, wood-free superstructure is the Eura Mobil Sealed Structure technology, in which glass fibre composite panels are bonded over the entire surface of aluminium profiles with high-strength industrial adhesives and then sealed without joints. The result is a body with high torsional rigidity, a long service life (10-year no-leak guarantee) and high resistance to weather-specific or chemical as well as mechanical stresses.

X SPOT ON!

The Xtura opens up a whole new chapter in terms of lighting performance. The high-power LED light bar mounted on the cab (optional) with a total light output of more than 21,000 lumens makes the night as bright as day when required. There are also lights at the rear and side of the railing to illuminate parking spaces or provide light while loading and manoeuvring in the dark.





EXTREMELY SELF-SUFFICIENT

Energy self-sufficiency for up to 20 days or more? - These are challenges that the Xtura thrives on. The "on-board power station" consisting of a 330 Ah lithium battery and 2x 135 Wp high-performance solar panels on the roof rack, plus additional power from folding mobile solar panels, form the basis for extremely long periods of self-sufficiency. Depending on conditions, you can remain independent of the power grid for even longer, as the Xtura quickly recharges energy during the journey via a reinforced alternator with 60 A charging capacity. With a 3 KW inverter / shore power charger, there are plenty of reserves on board for battery charging and cooking, as well as for the air conditioning system and other individual power consumers. A power sharing control system ensures optimum utilisation of shore power resources. The Empirbus-controlled on-board control displays also give you a convenient overview of all key performance parameters and on-board power reserves via the control panel or a smartphone.

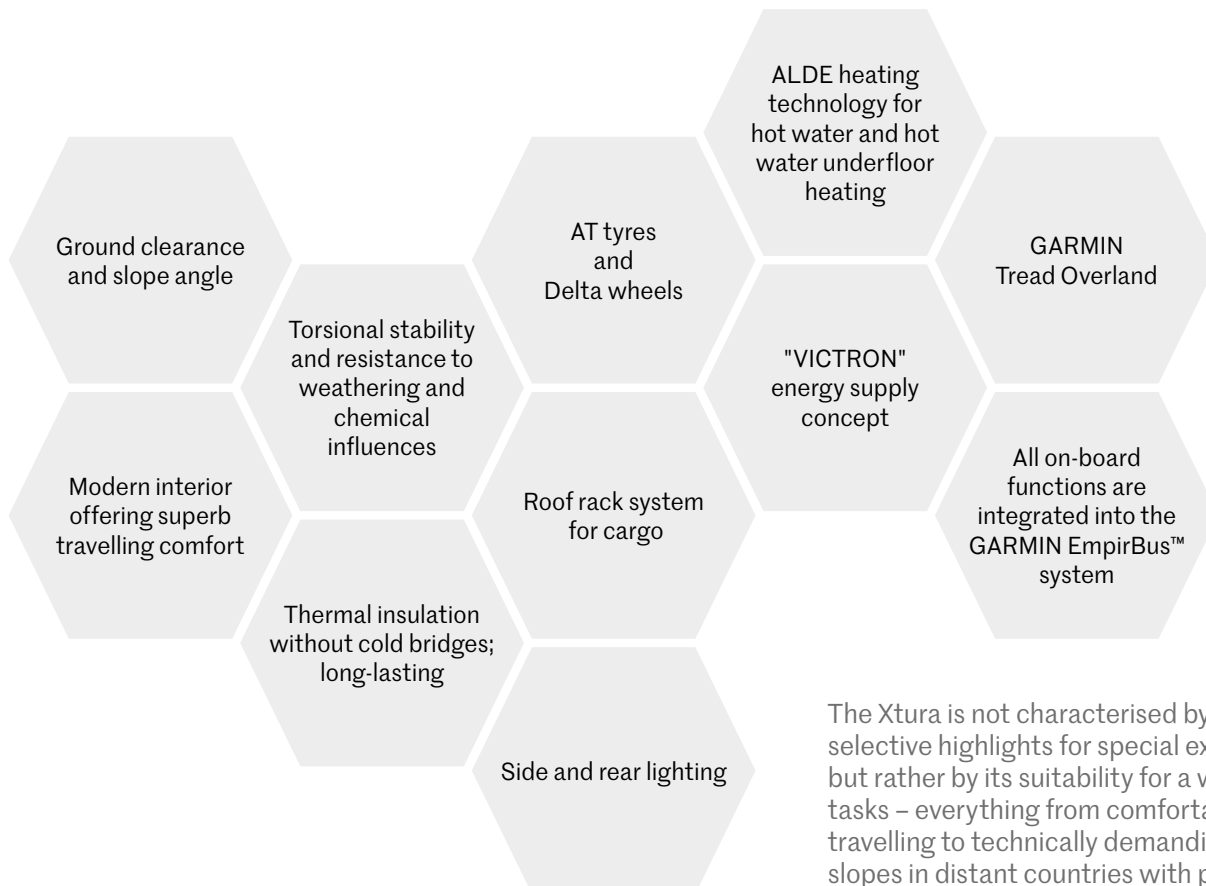
THE LONG-DISTANCE TRAVEL CONCEPT AT A GLANCE

1. Superstructure concept for long-distance travel and slopes
2. Sealed Structure technology
3. Off-road and long-distance travel equipment
4. All-season performance
5. Self-sufficiency >30 days
6. On-board control
7. Off-road navigation and safety

The Xtura is a conceptually well thought-out long-distance motorhome with a cross-system design.

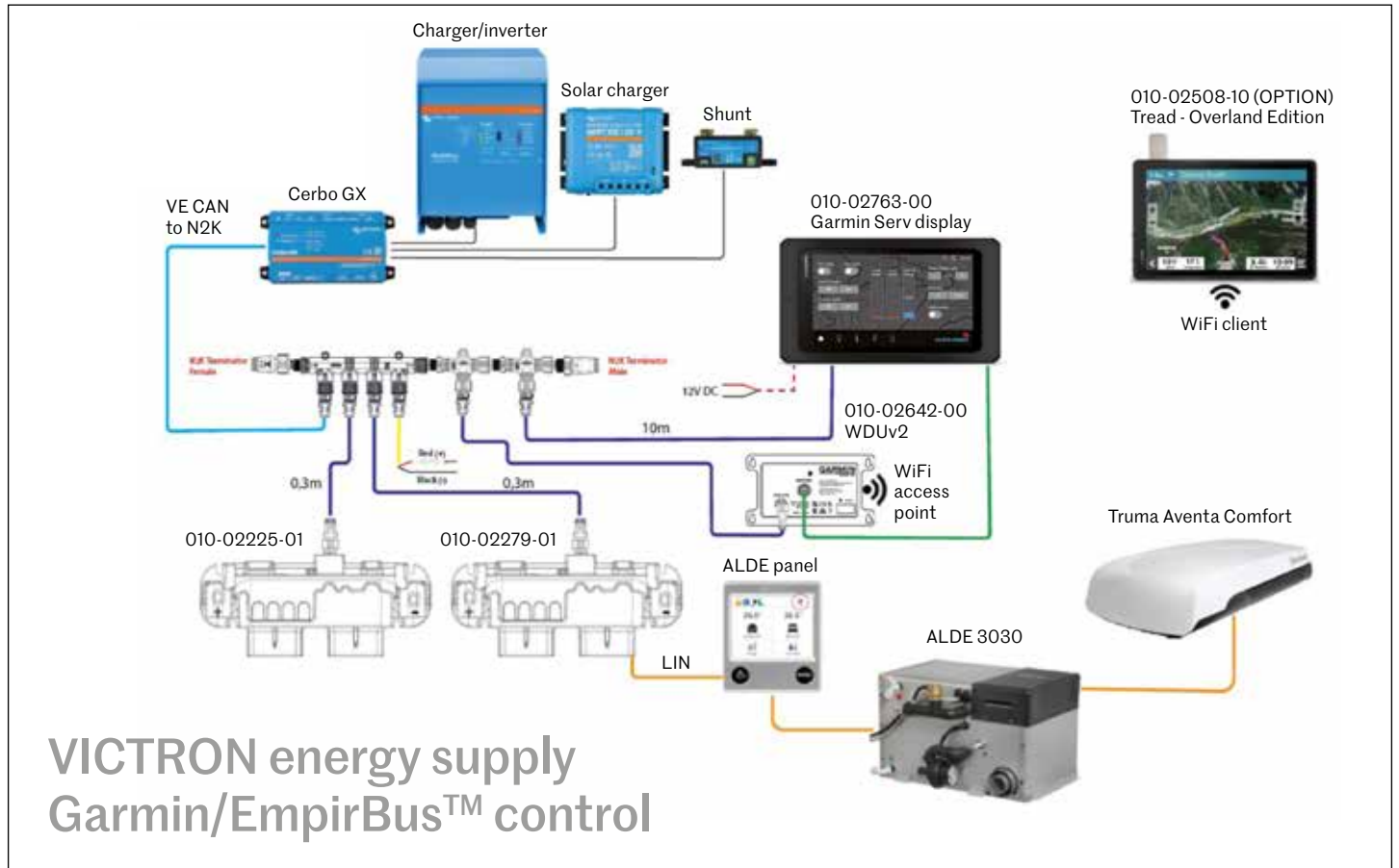


THE COMPONENTS FOR IMPLEMENTATION



The Xtura is not characterised by individual, selective highlights for special extreme situations, but rather by its suitability for a wide range of tasks – everything from comfortable and relaxed travelling to technically demanding challenges on slopes in distant countries with poorly developed infrastructures.

THE ENERGY SELF-SUFFICIENCY CONCEPT WITH BUS CONTROL



POWER SHARING VICTRON Multiplus

Setting for the maximum input current

Limited input current

Power from the battery

Battery

Limited input current is supplemented by the inverter at peak loads

Eura Mobil Xtura	
Inverter / shore power management	Shore power support (power sharing)
Sockets	All sockets are supplied
Hob	Gas and induction, also via inverter
Air conditioning	Via inverter and shore power
Solar	Glass frame modules 2 x 135 Wp = 270 Wp
Solar extension	Option: Portable solar panel 190 Wp

If the input current is limited (e.g. in parking areas), the Xtura automatically provides the missing power from the on-board battery if required.

OUTPUT AND FUNCTIONALITY OF THE POWER SUPPLY SYSTEM

Eura Mobil Xtura

Battery type	LifePo4
Capacity	1 x 330 Ah 1 battery with 4 cells
Max. charging/discharging current	400 A
Weight	27 kg
Energy utilisation rate	92% (only 4 cells, because one battery)
Real usable energy	304 Ah
Inverter / shore power management	Victron Multiplus 2,400 W continuous power 6,000 W peak power Efficiency: 95% Battery charging capacity 120 A Adjustable shore power limitation All 230V consumers (except heating) and all sockets are supplied by the inverter.



Lithium battery



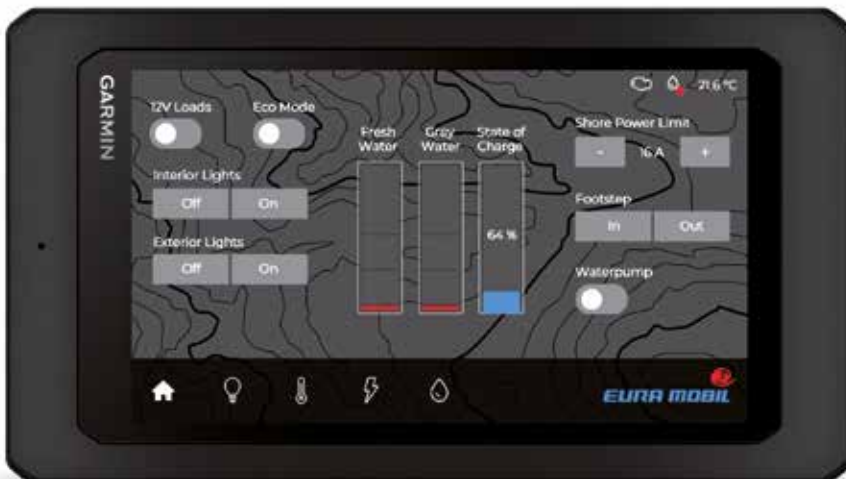
Solar power system



Garage with electrical distributor panel

Eura Mobil Xtura

Solar controller pre-fitting	Standard: Additional solar controller for portable solar panel connection
Alternator charging	2 x 30 A booster
Starter battery charging	Yes, 4 A
Control unit	Integration into GARMIN EmpirBus™ Individual devices via Bluetooth Addressable Adjustable shore power limitation



The Xtura combines high-energy peak and continuous output with convenient control via an on-board panel, a pad or a smartphone.

SELF-SUFFICIENCY AND NAVIGATION – SPECIFICS

Sample calculations for self-sufficiency*

A) High consumption, high charging power

	Individual data	Consumers incl.	Power/day
Average consumption		A/C superstructure Electric cooking Coffee machine Hair dryer Light Refrigerator Heating	
Solar yield			2,800 Wh/d
Solar yield			1,253 Wh/d
Number of hours of sunshine	5.8 h		
Power from 2 solar panels x 135W	270 W		
Efficiency	80%		
Solar power	216 W		
Yield from main engine			1,440 Wh/d
Assumed journey time	2 h		
2 Orion power	720 W		
Total self-sufficient energy yield			2,693 Wh/d
Self-sufficient energy balance			-107.2 Wh/d
On-board voltage			12V
Consumption/day			-9 Ah/d
Battery storage	330 Ah		
Available battery storage	92%		304 Ah
Possible self-sufficiency			34 days

B) Medium consumption, low charging power

	Individual data	Consumers incl.	Power/day
		Coffee machine Hair dryer Light-reduced refrigerator Heating	
Solar yield			1,400 Wh/d
Solar yield			216 Wh/d
Number of hours of sunshine	1 h		
Power from 2 solar panels x 135W	270 W		
Efficiency	80%		
Solar power	216 W		
Yield from main engine			720 Wh/d
Assumed journey time	1 h		
2 Orion power	720 W		
Total self-sufficient energy yield			936 Wh/d
Self-sufficient energy balance			-464 Wh/d
On-board voltage			12V
Consumption/day			-39 Ah/d
Battery storage	330 Ah		
Available battery storage	92%		304 Ah
Possible self-sufficiency			8 days

* Actual self-sufficiency depends on individual charging capacity, individual consumption and individual conditions

Garmin Tread – Overland Edition

- Topographical maps
- Vehicle-specific navigation
- Birds-eye satellite images via download included
- Integrated:
 - Altimeter ■ Barometer ■ Compass
 - Inclination angle sensors ■ Gyroscope
- Integrated inReach® global satellite communication with two-way text messages and interactive SOS emergency calls



LINES

Xperience line

190 HP Mercedes-Benz engine
MB 9G-Tronic autom. transm.
Fuel tank, 92 litre
MBUX
Electric roof fan
Midi-Heki
Mesh screen for the body door
Pre-cabling for solar power system
Oven
Smartphone charging cradle
Distronic
Storage trays with cover on dashboard
Automatic air conditioning
Traffic sign assistant

Driving assistance package*

Active lane departure assistant
High beam assistant
Fog light
LED headlights
Tyre air pressure sensors

Overland line**

Delta rims + BFG
Roof rack with solar panels
Rear ladder
Spare wheel holder at the rear, incl. wheel

Adventure line***

Garmin Tread all-terrain satnav
Skid plate
Folding solar module
Driver cab underfloor heating

* in conjunction with Xperience line

** in addition to Xperience line

*** in addition to Overland line

STANDARD FEATURES

	Xtura MERCEDES	Xtura MERCEDES		
CHASSIS				
Mercedes Sprinter	S	Living space with decorative elements	S	
Sequential all-wheel drive	S	Mini Heki skylight over rear bed	S	
ABS	S	Felt wall pockets	S	
Manual air conditioning	S	Felt-look window shades	S	
Frame extension	S	Headboard with shelf	S	
Driver / passenger airbag	S			
Electric window risers, driver's cab central locking system	S	KITCHEN		
Fix & Go breakdown kit	S	Kitchen with ergonomically shaped worktop	S	
Daytime running light	S	Refrigerator 146 l	S	
16" wheels	S	Cooker with electric ignition, large work surface, number of gas/induction hobs	2/1	
ASR, EBD and ESP	S	Pull-outs with self-closing mechanism and soft stop, metal roller runners	S	
		Divided deep wall units with slide guards	S	
DRIVER'S CAB			Colour-accentuated wall units	S
GRP hood, insulated, with large storage compartments	S	Extra-wide drawer	S	
Stylish fenders, wide designs	S	Spice board	S	
Driver cab seat in structured upholstered fabric	S	Compressor refrigerator	S	
		Water tap with rotating non-drip outlet	S	
		Worktop with indirect illumination for pull-outs	S	
SUPERSTRUCTURE			WASHROOM	
Lightweight construction floor throughout, insulated and heated	S	Centre washroom with swivel wall for integrated shower room	S	
Aluminium profile without cold bridges for floor-wall joint	S	Storage closet and mirror	S	
Lightweight construction floor plate with aluminium inlay	S	Large roller-mounted tank for cassette WC	S	
Wood-free GRP walls	S	230 V power socket	S	
PVC floor covering with footstep sound insulation	S	Bench toilet	S	
Roof edge profile made from powder-coated aluminium with joint sealing	S	Swivel washbasin	S	
Mini Heki skylight roof hood over front section	S			
Roof, wall, flooring made from GRP, fully insulated	S	WATER INSTALLATION		
Sloping rear wall for optimised slope angle	S	Fresh water system made from Hartflex plastic	S	
Wall thickness of walls/roof/floor: 30/30/85 mm	S	Fixed pipe system for waste water	S	
Isofix, 1 x in driving direction	S	145 l insulated and heated fresh water tank	S	
Garage floor with chequer plate	S	Central service compartment with access to the water drainage taps	S	
Electric access step	S	105 l waste water tank in insulated and heated floor trough	S	
Alde hot water heating	S	Electrically operated waste water tank emptying at the push of a button	S	
Seitz framed window with mesh screen flush with the external wall	S	Fittings with ceramic cartridges	S	
Service flaps with double seal, insulated inlay and rotary-knob locks	S	Siphons to prevent odours	S	
Single key for entire superstructure	S	Pressurised water pump	S	
Large LED rear lights in Integra line design	S	2 drainage valves for fresh water system	S	
Additional, lowered side and floor storage compartments (depending on floor plan)	S	Drain valves insulated and heated	S	
Exterior lighting over the body door	S			
Extra-wide access door with window and waste bin	S	ELECTRICAL INSTALLATION		
Double-moulded GRP sandwich roof	S	Easily accessible electrical distributor panel in the garage	S	
Garage lowering system with insulated well	S	330 Ah lithium battery	S	
		On-board control panel with separate displays for water, battery and charging voltage	S	
LIVING SPACE			LED reading spotlights	S
"Chalet Rustico" interior	S	Light switch system with household logic system	S	
Upholstery design: Trail	S	Number of 230 V power sockets: 3	S	
Sofa with longitudinal seat on passenger side	S	Number of 12 V power sockets: 1	S	
Table with 360° turning and sliding fixture, folding	S	Number of USB ports: 3	S	
Two-tone furniture décor	S	120 A charger	S	
Wall unit doors with solid spring closures	S	LED ambient lighting	S	
Entrance area with illuminated handle	S			
Rear storage compartments with anchor rails	S			
Single beds with 7-zone cold foam mattresses	S			
Swan neck lamps with USB ports in the sleeping area	S			

HIGHLIGHTS / DETAILS*

INTERIOR:



Felt pockets



Gas/induction cooking



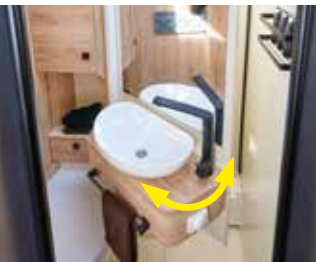
Towel rails



Swan neck lamps



Panoramic roof



Swivel shower wall



Face-to-face single seat



Lashing rails



Compressor refrigerator



Alde in floor/seat

EXTERIOR:



Rims



Lights on rail



Camera



Roof rail



Chassis slope angle

* Some pictures show optional special features

SPECIAL FEATURES

PACKAGES

- E-PXP01-24 Xperience line
- E-POL01-24 Overland line
- E-PAD01-24 Adventure line
- E-2869-24 MB driving assistance package for Xtura

CHASSIS OPTIONS

- E-2124-24 190 HP Mercedes-Benz engine
- E-2132-24 MB 9G-Tronic autom. transm.
- E-2226-24 Delta rims with all-terrain tyres
- E-2255-24 Spare wheel holder at the rear with Delta spare wheel
- E-2372-24 Fuel tank, 92 litre
- E-2900-24 Skid plate
- E-3237-24 Moniceiver with rear-view camera

- E-3238-24 Naviceiver w. rear-view camera
- E-3239-24 MBUX with rear-view camera
- E-5111-24 Rear comfort supports
- E-5122-24 Trailer coupling

SUPERSTRUCTURE OPTIONS

- E-3215-24 Loudspeakers (2) in the superstructure
- E-3232-24 Garmin Tread all-terrain satnav
- E-3439-24 Front flat screen wall mount
- E-3613-24 All-round insulation in the driver cab
- E-3617-24 Driver cab underfloor heating
- E-5221-24 Roof-mounted air-conditioning system, 230 V
- E-5227-24 Rear ladder
- E-5243-24 4 m awning
- E-5324-24 Roof rack with solar panels
- E-5412-24 Multi-function socket

- E-5441-24 External shower (cold/warm)
- E-5534-24 Electric roof fan
- E-5536-24 Midi-Heki
- E-6111-24 Driver cab seat in structured upholstered fabric
- E-6138-24 Grey leather upholstery
- E-6220-24 Additional bed 1 person
- E-6225-24 Child's bed in the cab
- E-7230-24 Extractor hood
- E-7238-24 Oven
- E-7255-24 Large refrigerator
- E-7270-24 Folding solar module
- E-7341-24 Pre-cabling for solar power system
- E-7512-24 External gas socket
- E-7516-24 Dual-control CS with de-icer
- E-7812-24 Ambient lighting

TECHNICAL DATA



XT 686 EF

BASIC VEHICLE

Euro 6d Final engine (Xperience line)	140 kW (190 HP)
Chassis	Mercedes Sprinter 4x4
Fuel tank	65 l Diesel + 22 l AdBlue

MB Sprinter 419 CDI

DIMENSIONS AND WEIGHTS

Load capacity in the rear storage area	l	2700
Size of storage door at the rear	cm	80 x 105
Wheelbase	m	3665
Tyres		225/75 R16C (265/60 R18C)
Total techn. perm. weight when laden	kg	4.100 kg
Weight in ready-to-drive state ¹⁾	kg	3.350 kg
Trailer weight, braked ²⁾	kg	2000
Total length	m	6.88
Total width	m	2.20
Overall height	m	3.05
Standing height	m	1.98
Dimensions of front side seating group	cm	83 x 60
Bed conversion of the seating group	cm	Not specified
Dimensions of rear bed(s)	cm	196 x 80 / 195 x 80
Dimension of longitudinal bench	cm	40 x 60
Sleeping areas		2 (3)
Permissible number of people ⁴⁾		3
3-point seatbelts total		3
Framed window with mesh screen		4
Number of service flaps		3
Wall thickness of walls, roof, floor	mm	30 / 30 / 85
Fresh water / waste water tank	l	145 (25)* / 105
Battery capacity	Ah	330 (lithium)
Refrigerator	l	146

¹⁾ Dimensions in ready-to-drive state as per EU Directive 1230/2012: Vehicle with standard equipment according to the manufacturer's specifications, 90% of the filling quantity for fuel, 75 kg (weight of the driver), 100% water in the drive position, gas (ALU 11-kg gas bottle), without special features | ²⁾ Note the weight of the vehicle/trailer combination | ³⁾ Not in combination with 6430 table with chrome table base | ⁴⁾ Numbers in brackets only in combination with 2324* superimposed load to 3.65 t* or 2313 Maxi chassis (number in second bracket) | * Water quantity in drive position 25 l. If there is sufficient remaining load, the water tank indicated as having a capacity of 25 l can be filled to its actual capacity of 140 l.

 **Eura Mobil**
Sealed Structure



All of the information in this brochure relates to the products listed herein and does not apply to any other products of Eura Mobil GmbH.

The models illustrated in this brochure show the features available in Germany. They may also contain special features and accessories that are not included with the standard scope of delivery. All weights quoted are values with a fluctuation limit of +/- 5 per cent.

Due to legal regulations, differences from the model variations described here and equipment featured may be necessary in certain countries. Please ask your Eura Mobil dealer about the exact scope and range available of model-specific and model-neutral features. Subject to errors and changes in design, equipment and special features. The publication of this brochure renders all previous catalogues invalid.

General information regarding the weight situation in motor homes

Special features (additional features) increase the weight in the vehicle's ready-to-drive state and reduce the cargo capacity. The weight of the additional equipment is detailed in our brochure information or your dealer / seller can tell you. The maximum number of persons permitted depends on the weight and axle load. It can be reduced if special features (= special equipment / additional equipment) and accessories are installed, so in the interests of cargo loading capacity certain seats cannot be used. If all seats are to be used, some cargo capacity may need to be foregone. The technically permissible overall weight and axle loads must not be exceeded.

The cargo loading capacity reduces with the installation of special features (= special equipment / additional equipment) and accessories. The cargo loading capacity is also not only dependent on the weight in the vehicle's ready-to-drive state, the actual vehicle weight, the weight of the accessories and the technical permissible overall weight, but also on the respective axle loads. The only way to achieve the highest possible payload supported by the vehicle's technology is to have a corresponding, axle-load-dependent load distribution.

Unless otherwise regulated, weight in ready-to-drive state as per Article 2 (4a) Regulation (EU) 1230/2012 is defined as:

Vehicle dimensions with standard equipment according to manufacturer specifications (incl. vehicle tool kit + charging cable for superstructure battery)

- + Fuel tank filled to 90%
- + 75 kg (weight of the driver)
- + Fluid gas bottle (filling capacity of 11 kg) made of aluminium filled to 100 % (equals 18 kg in total)
- + Fresh water tank filled to 100% in drive position (capacity of the fresh water tank is limited to 25 litres of fresh water in ready-to-drive state, where technically feasible*)

= Weight in ready-to-drive state

* marked capacity of the fresh water tank pursuant to appendix V. Part A (2.6 Fn).

(h) Regulation (EU) 1230/2012 is limited according to vehicle model to 25 litres by an overflow valve (recommended filling for driving)

The technically permissible overall weight according to Article 2 (7) Regulation (EU) 1230/2012 is defined as: The vehicle's maximum weight when loaded as provided by the manufacturer.

Pursuant to the information provided in the catalogue, the maximum cargo loading capacity is defined as: Technically permissible overall weight - weight in ready-to-drive state = maximum cargo loading capacity.

© Eura Mobil GmbH 2024

Reprints, including excerpts thereof, are only permitted with the written consent of Eura Mobil GmbH.

As of February 2024

PEMXT - 2024 - DE-02/2024

Eura Mobil GmbH

Kreuznacher Strasse 78 · 55576 Spredlingen (Rheinhesen)

Tel. +49 6701 / 203 200 · Fax +49 6701 / 203 210

info@euramobil.de · www.euramobil.de